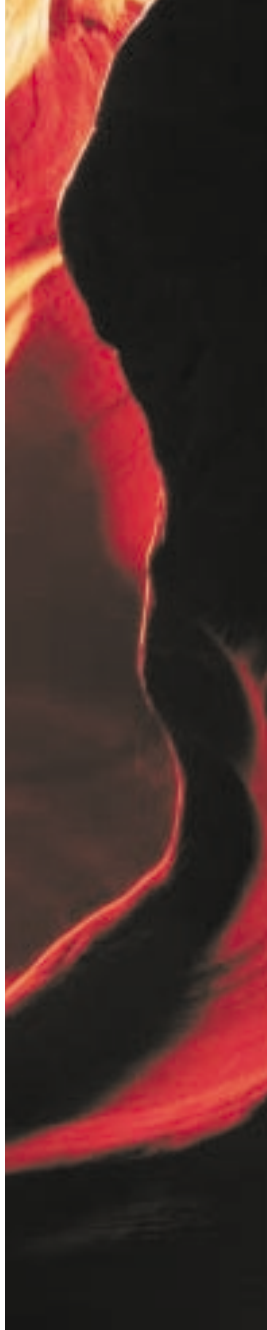


Flathoning and Fine Grinding

DLM 705 – 1505





Flathoning and Fine Grinding

DLM 705 –

Increased quantities and series production with high stock removal require more performance. Our DLM 705 – 1505 range of machine is dedicated to high productivity, user-friendliness, economic efficiency, precision and security.

Flathoning with diamond or CBN-wheels or alternatively fine grinding with conventional SIC or corundum wheels – opt for a future in super finishing with a newly developed machine from the Stähli Group. Performance, sturdiness and quiet running for high stock removal stand for high precision and low piece cost. The technological advantages are well in evidence:



- Frame construction for high workloads
- Mineral cast structure guarantees top thermal and mechanical endurance

Inspiration. The surface of the earth changes inexorably. Water and wind constantly erode the skin of our planet and alter its countenance. Forms, surfaces and structures come into being in endless diversity. Unique, entrancing works of art, characterized by a beauty and quintessence such as only Nature can create. Nature is our model – both inspiration and standard for our endeavors towards innovation and perfection.

1505

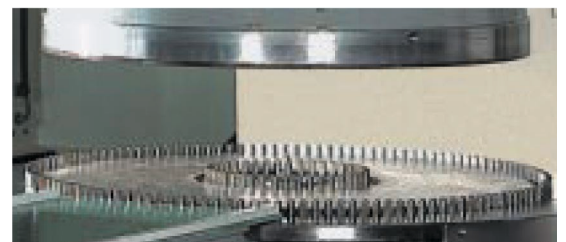


Technical data

	DLM 705	DLM 1005	DLM 1505
Working wheel diameter, external	500–720 mm	800–1250 mm	1300–1600 mm
Number of carriers	4–7		
Height range between working wheels	<390 mm		
Working load continuously variable	0–2000 (4000) daN	0–3500 (6000) daN	0–4000 (8000) daN
PC-operating control	programmable control		
Switch off precision	0.1 my		
Cooling of working wheel	yes		
Speed range, upper and lower wheel, continuously variable			
Flathoning and fine grinding	0–200 (400) min ⁻¹	10–240 (15–350) min ⁻¹	6–150 (10–200) min ⁻¹
Center drive	0–100 (200) min ⁻¹	5–120 (7–180) min ⁻¹	4–80 (5–100) min ⁻¹
Direction of rotation for all drives	programmable control		
Power ratings			
Total driving power	22 (39) kW	40 (61) kW	61 (97) kW
Dimensions incl. guards	1900 x 1700 x	2600 x 2100 x	3100 x 2800 x
W x D x H	2600 mm approx.	2620 mm approx.	2720 mm approx.
Weights	7800 kg approx.	12500 kg approx.	19500 kg approx.
Options			
Semi-full automation, robot loading, interlink	yes		
Interlink to precision deburring systems	yes		

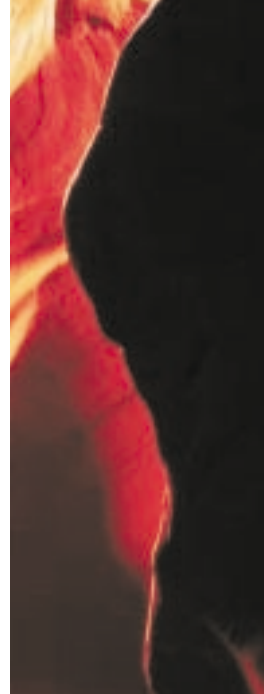
Values in brackets = amplified version

- Flow cooling system of the working wheels
- Quick loading and unloading thanks to the ingenious „Sandwich-system“
- Part or full automation easily interlinked to precision deburring systems or the like
- Process controlled machining
- Integrated computer-assisted measurement
- High availability
- Incidental analyse by machine control
- Remote maintenance / telediagnostic / online-support



We are one of the leading companies worldwide in the manufacture of flathoning, lapping and polishing machines. For our customers, we are represented just as much by our standard products as by custom - made and need - oriented special productions. The special know-how needed for this is due to decades of experience of daily new assignments in contract work, with the support of our expert and committed workforce. We are happy to pass on our know-how to our customers within the framework of contract work, tests and complex

or experimental project studies. Try out our reliability and innovative dynamism. Further information may be obtained from the following addresses or from our homepage.



Consultation and Sales, Machining and Testing centers:

www.stahli.com

A.W. STÄHLI AG
Postfach 264
Sägestrasse 10
CH-2542 Pieterlen/Biel
Tel. +41 (0) 32 376 05 00
Fax +41 (0) 32 376 05 09
Info-LTP@stahli.com

A.W. STÄHLI AG
Postfach
Zürcherstrasse 262
CH-8406 Winterthur
Tel. +41 (0) 52 203 50 51
Fax +41 (0) 52 203 21 40
Info-LTW@stahli.com

STÄHLI Läpp-Technik GmbH
Bahnhofstrasse 37
DE-71101 Schönaich/Stuttgart
Tel. +49 (0) 7031 65 20 38
Fax +49 (0) 7031 65 04 98
Info-LTS@stahli.com

FLP STÄHLI GmbH
Thura Mark 5
DE-06780 Zörbig/Leipzig
Tel. +49 (0) 34956 3 97 0
Fax +49 (0) 34956 3 97 19
Info-LTZ@stahli.com

STÄHLI USA, Inc.
270 Jamie Lane
US-Wauconda, IL 60084
Phone +1 847 526 3527
Fax +1 847 526 3528
Info-LTUS@stahli.com